

## Baltic Lift – Self-Propelled Crane Barge





## Baltic Lift – Self-Propelled Crane Barge

### Technical data

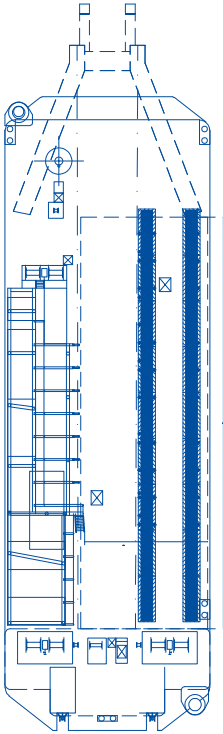
<b>Basic data</b>	Vessel type	Self-Propelled Crane Barge
	Year of built	1974
	Yard	Mützelfeldtwerft Cuxhaven
	Port of registry	Rostock
	Flag	German
	Call sign	DFQC
	IMO-No.	8872796
	Class	DNV-GL (100A5K MC)
<b>Main dimensions</b>	Length o.a.	53,78 m
	Breadth	17,85 m
	Depth	4,55 m
	Draft	min 1,90 m, max 2,40 m
	Gross tonnage	1.086
<b>Main crane</b>	Lift capacity A-frame	max. 200 t
	Outreach	max. 18 m
<b>Auxiliary crane</b>	Model	Liebherr HS 843
	Boom length	up to 32 m in stock, extendable to max. 53 m
	Lift capacity	e.g. 23 t at 6,5 m with 32 m boom, see table
<b>Machinery &amp; propulsion</b>	Main engine	2 x Deutz SBF 12 M 716
	Power	2 x 321 kW
	Propulsion	2 x 360° Schottel Rudderpropeller
	Bow thruster	1 x Cone Jet Schottel SKJ 142, 325 kW
	Gensets	2 x 580 kVA, 1x 75 kVA 380/220 V, ,50 Hz
<b>Performance</b>	Service speed	4 kn
	Max. speed	6 kn
	Average consumption	Service: 250 l/h
<b>Tank capacities</b>	Fuel oil	21,5 m <sup>3</sup>
	Fresh water	15 m <sup>3</sup>
<b>Deck capacity</b>	Free deck space	565 m <sup>2</sup>
	Deck strength	up to 10 t/m <sup>2</sup>
<b>Accommodation</b>	Cabins	12 Accommodation (5 x 1) / Living Containres (7 x 1)
	Office	yes
<b>Equipment</b>	Communication	GMDSS A1, UHF/VHF Radio, GSM /INMARSAT/SAT - Voice and Data, Internet
	Nautical	AIS, ARPA Radar, ECS, RTK DGNSS, Echo Sounder, SAT-TV Raymarine, UKW Sailor 6000 + repeater
	Sewage plant	yes
	Winches	1 x 20 t, 1 x 5 t
	Compressor	t140 m <sup>3</sup> /h, 8 bar, Atlas Copco
	Pumps	3 x 455 m <sup>3</sup> /h, 7 bar
	Work boats	steel boat (7 m), Offshore RIB (6m, 100 hp)
	Dredging equipment	optional
	Offshore dive equipment	optional
	ROV Services	optional
	<b>Anchorage system</b>	Spud-legs
4-point-mooring		optional
Wadden sea		Ship can be grounded for low tide

# Baltic Lift – Self-Propelled Crane Barge

## Technical drawings

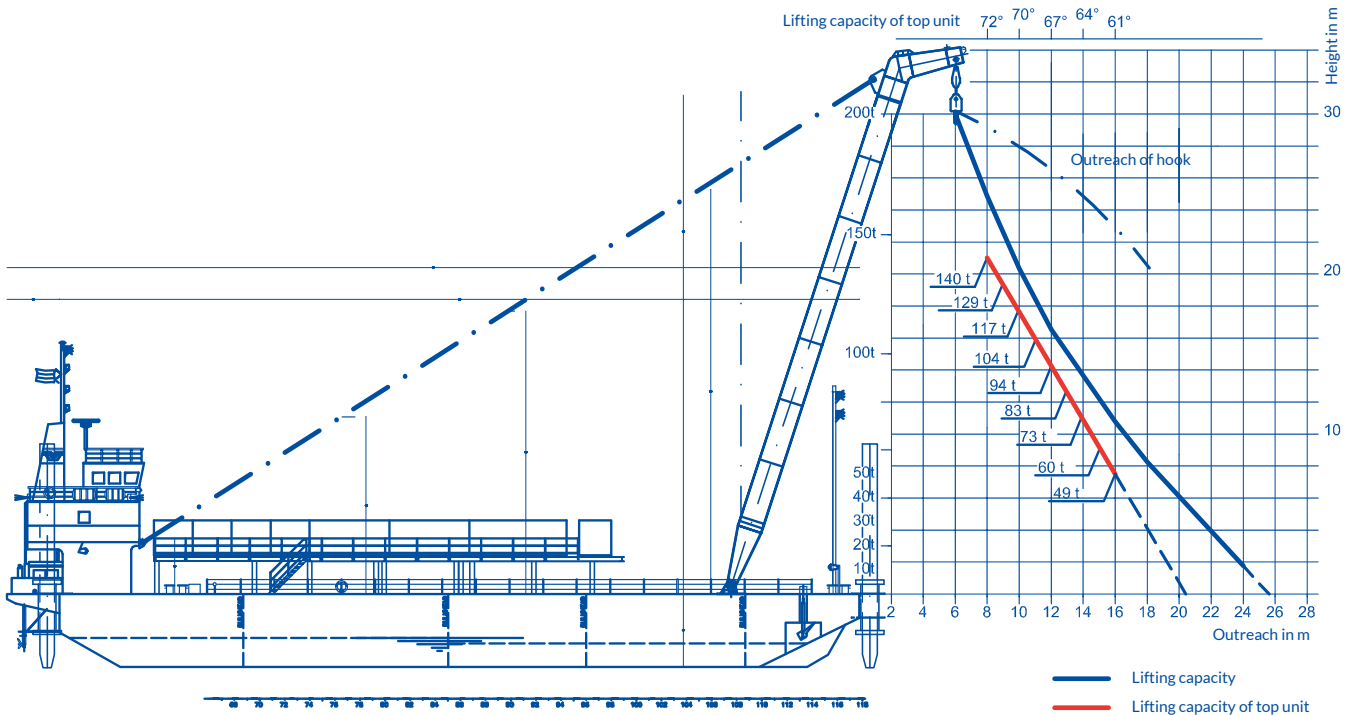
Side view / M 1:200

Lifting capacity of auxiliary crane / Liebherr HS 843



Boom length	Lifting capacities in tonnes		Ballast: 12.3 t			Source: Liebherr	
	11 m	14 m	17 m	20 m	23 m	29 m	32 m
Outreach	t	t	t	t	t	t	t
3,5 m	60,0						
4,0 m	49,9	45,4					
4,5 m	47,3	43,8	38,6				
5,0 m	39,2	39,2	37,4	34,6			
5,5 m	33,4	33,4	33,4	33,3	31,1		
6,0 m	29,1	29,0	29,0	29,0	28,9	25,9	
6,5 m	25,7	25,7	25,6	25,6	25,5	25,2	23,5
7,0 m	23,0	23,0	22,9	22,9	22,8	22,6	22,6
7,5 m	20,8	20,8	20,7	20,7	20,6	20,4	20,4
8,0 m	19,0	19,0	18,9	18,8	18,7	18,6	18,6
9,0 m	16,1	16,1	16,0	15,9	15,8	15,6	15,7
10,0 m	13,9	13,9	13,8	13,8	13,6	13,5	13,5
11,0 m	12,2	12,2	12,1	12,0	12,0	11,8	11,8
12,0 m		10,9	10,8	10,7	10,6	10,4	10,4
13,0 m		9,8	9,7	9,6	9,5	9,3	9,3
14,0 m		8,8	8,7	8,7	8,6	8,4	8,4
15,0 m			8,0	7,9	7,8	7,6	7,6
16,0 m			7,3	7,2	7,1	6,9	6,9
17,0 m			6,7	6,6	6,5	6,3	6,3
18,0 m				6,1	6,0	5,8	5,8
19,0 m				5,7	5,6	5,4	5,4
20,0 m				5,3	5,2	5,0	5,0
22,0 m					4,5	4,3	4,3
24,0 m						3,7	3,7
26,0 m						3,2	3,3
28,0 m						2,9	2,9
30,0 m							2,5
32,0 m							2,2

Top view / main deck



## Baltic Lift – Self-Propelled Crane Barge

